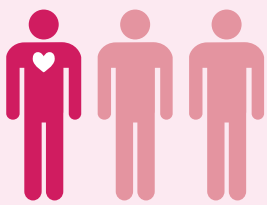




THE BIG PICTURE

18,276 families received care and support from hospice services
Hospice services across the country provided care and support for 18,276 people and their families, carers and whānau, either before or after the death of their loved one.



1 in 3

people who died in New Zealand were supported by hospice

86%

of people who needed palliative care in the community (outside of public hospitals and aged residential care) were supported by hospice

51%

of people who needed palliative care outside of public hospitals were supported by hospice

52% of hospice patients were male and **48%** female

Approximately

30%

of people using hospice services had a non-cancer diagnosis, such as respiratory or cardiovascular conditions

77%

of the people who died supported by hospice were cared for in settings other than hospice inpatient units – such as at home, in hospitals or in aged residential care facilities

99

different ethnic groups were identified by people using hospice services

People of all ages use hospice services. In 2016, **23** patients were over the age of 100, and **601** patients were under the age of 40

23%

of people using hospice services had one or more admissions to an inpatient facility